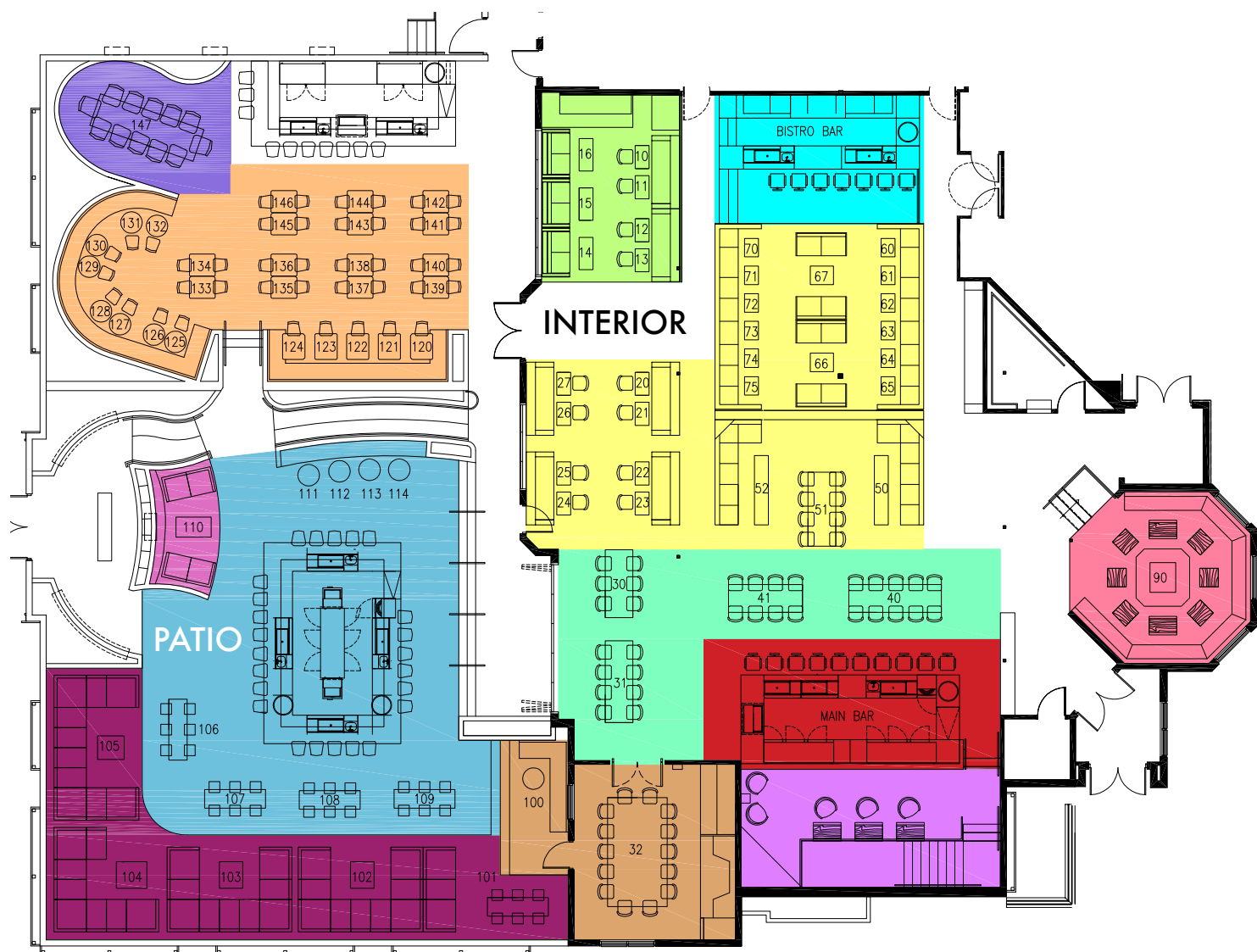




ivy

BAR | KITCHEN

LUNCH • BRUNCH • DINNER • COCKTAILS

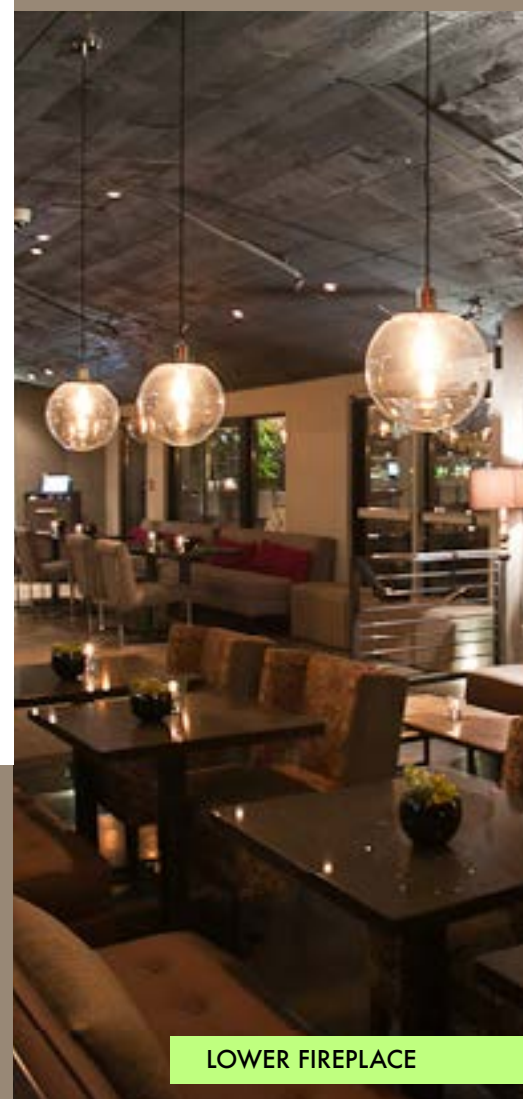


INTERIOR

- MAIN DINING AREA
- PRIVATE DINING ROOM & PATIO BALCONY
- CELEBRATION TABLES
- BAR AREAS
- IVY UPPER LOUNGE
- ATRIUM LOUNGE
- LOWER FIREPLACE
- BISTRO BAR

PATIO

- MAIN PATIO BAR
- SOCIAL LOUNGE SEATING
- OPEN AIR DINING
- GARDEN GROTTO CELEBRATION TABLE
- PATIO FIREPLACE NOOK



IVY'S AWARD WINNING INTERIOR AND PATIO SPACES SET THE PERFECT AMBIANCE FOR YOUR CORPORATE OR PRIVATE EVENT.

CONTACT US TO TO PLAN YOUR EVENT - RESERVATIONS@IVYBAR.CA

3330 S SERVICE RD BURLINGTON, ON L7N 3M6, CANADA +1 905-333-4891 | WWW.IVYBAR.CA

dgcentertainment.com

LOWER FIREPLACE

UPPER IVY LOUNGE

IVY SPACES

THE LIVING WALL - Ivy is proud to showcase a 600 square foot Nedlaw[™] Living Wall System as the heart of our restaurant. This serene and impressive focal point creates an atmosphere both calm and energizing at the same time.

MAIN DINING ROOM - Comfortable dinner seating suitable for tables of 2 to 12 persons, or a large group of up to 42 persons.

PRIVATE DINING ROOM - Our Private Dining Room seats up to 14 persons for dinner, or share plates and cocktails. Ivy's Private Dining room boasts a fireplace, audio-visual fitted TV, and a private patio balcony on our Ivy Garden Patio. Perfect for a corporate presentation or an intimate dinner with friends.

CELEBRATION TABLES - These tables are great for larger groups from 8 to 20 persons for full dinner service, or social snacking and cocktails.

BAR AREA - Our Main Bar and Bistro Bar are perfect for dining and socializing. Modern elegant design, soft leather high-back chairs, and great views overlooking the entire Restaurant and Bar-make Ivy's Bar Spaces a popular destination.

IVY UPPER LOUNGE - Nestled under Ivy's Music Balcony, beside the backdrop of the gorgeous Ivy Living Wall, the Upper Lounge seats groups of 10 to 22 persons for social lounging, snacking, and cocktails. Views of the entire room oversee all the action.

ATRIUM LOUNGE - The Atrium is a wonderful private space for larger groups of 20 to 40 persons. This area is suitable for social snacking, cocktails, and casual mingling. Guests enjoy our their own private lounge style seating, with fabulous natural light and a perfect view and access to the action.

LOWER FIREPLACE - Perfect for a cozy date night dinner, or social snacking and cocktails for 8 to 14 persons.

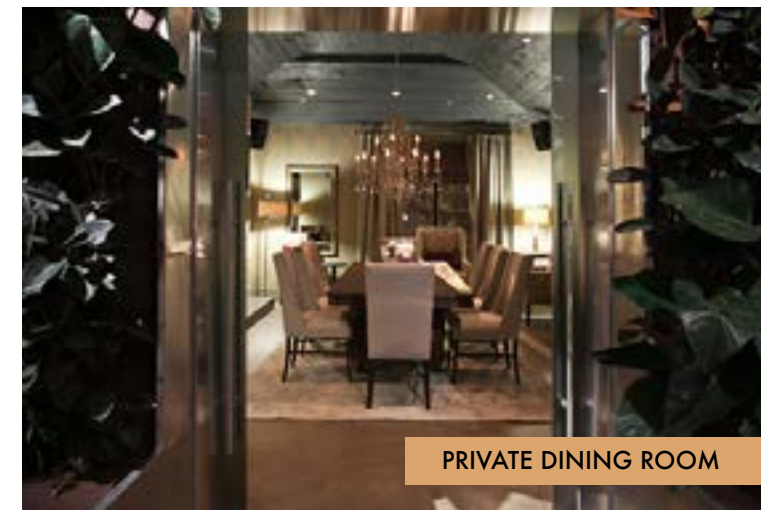
IVY GARDEN PATIO - Ivy's 5000 square foot Garden Patio hosts:

- 2 full-service bars with bar stool and bar table seating
- 6 social lounge seating areas for groups of 6 to 10 persons, for casual lunch, cocktails and share plates, or late night groups
- An open air dining area that seats up to 60 persons
- Our intimate garden grotto celebration table that seats up to 12 persons
- A sofa-seated fireplace nook which casually seats 6 to 8 persons

Ambiance, lush plant life, and world-class design make the Ivy Garden Patio an Oasis that will most certainly keep you coming back.



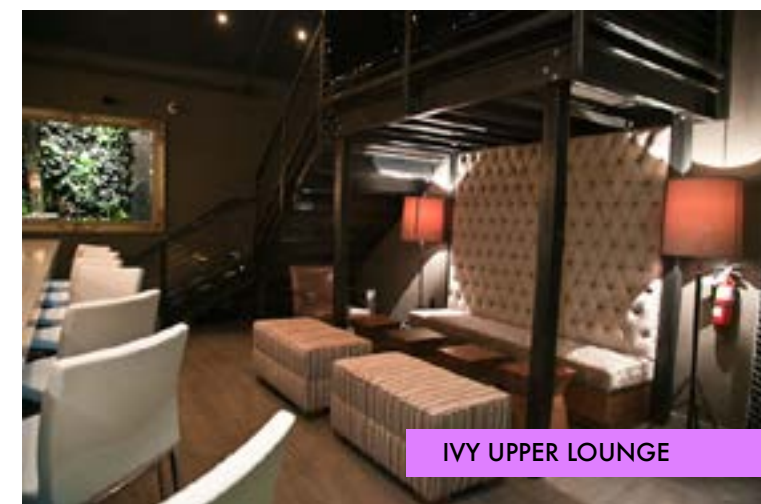
MAIN DINING AREA



PRIVATE DINING ROOM



CELEBRATION TABLES



IVY UPPER LOUNGE



BISTRO BAR